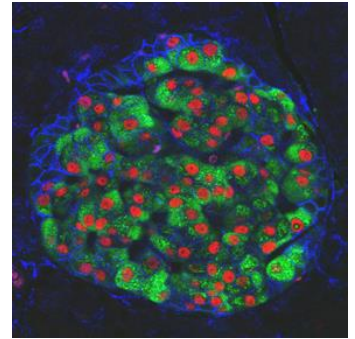


SPRING 2015 ISLET CLUB
University of Vermont, College of Medicine - Davis Auditorium
Burlington, VT
April 11, 2015



Agenda:

8:30 am – Continental breakfast and registration

9:25 - Introduction

9:30-12:40 – Morning Session

I. Insulin Secretion Biology

9:30-10:00

A mechanism by which lipids increase secretion at basal glucose

*Nathanael Miller, Linsey Stiles, Marc Liesa, and Orian Shirihai**

Boston University

10:00-10:20

Lipid induced changes in the calcium sensitivity of insulin exocytosis

*Karel Erion, Nathan Burritt, Jude Deeney, and Barbara Corkey**

Boston University

10:20-10:40

Beta cell specific deletion of ABHD6 in mouse islets enhances insulin secretion by both fuel and non fuel stimuli

*Shangang Zhao, Pegah Poursharifi, Yves Mugabo, Marie-line Peyot, Erik Joly, Murthy Madiraju, and Marc Prentki**

University of Montreal

10:40-11:00

Pgc-1 coactivators are required for fatty-acid-potentiated insulin secretion and appropriate lipid storage in mature β -cells

*Nathalie Jouvét, Oropeza D, Bouyakdan K, Perron G, Ringuette L-J, Philipson LH, Kiss RS, Poitout V, Alquier T, and Jennifer L. Estall**

University of Montreal

11:00-11:20 Coffee Break

11:20-11:40

P21-activated kinases role in the potentiation of GSIS by fatty acids

Valérie Bergeron, Julien Ghislain, Stephanie M Yoder, Debbie C Thurmond, and Vincent Poitout

University of Montreal

II. Beta Cell Biochemistry and Signaling

11:40-12:00

Metabolic function of Wbnt signaling pathway

*Tianru Jin**, *Wilfred Ip* and *Weijuan Shao*

University of Toronto

12:00-12:20

Dairy derived bioactive fatty acids mitigate β -cell glucolipototoxicity

Shae Rowlandson, *Tom Jetton*, *Jana Kraft*, and *Jay Gupta**

University of Vermont

12:20-12:40

Integrated, step-wise, mass-isotopomeric flux analysis of the TCA

Tiago Alves, *Rebecca L. Pongratz*, *Xiaojuan Zhao*, *Orlando Yarborough*, *Sam Sereda*, *Orian Shirihai*, *Gary W. Cline*, *Graeme Mason*, and *Richard Kibbey**

Yale University

12:40-1:15 – **Lunch (Davis Lobby)**

1:15-5:20 – Afternoon Session

II. Beta Cell Biochemistry and Signaling (continued)

1:15-1:35

Vitamin D3 signaling in INS1 cells under normal and glucotoxic stress

Sajani Sivakumar, *Shae Rowlandson*, and *Jay Gupta**

University of Vermont

1:35-1:55

The role of novel TORC1-dependent signals in β -cell function and glucolipototoxicity

Lucia Rameh, *Karel Erion*, *Ashley Mackey*, *Deborah Sarkes*, *Barbara Corkey*, and *Jude Deeney**

Boston University

III. Beta Cell Growth, Development, and Survival

1:55-2:15

Deciphering the regulation of beta-cell proliferation in a nutrient excess rat model

Valentine Moullé, *Bader Zarrouki*, *Kevin Vivot*, *Julien Ghislain*, and *Vincent Poitout**

University of Montreal

2:15-2:35

Inflammatory cytokine-induced pancreatic cell differentiation

Ivan A. Valdez, *Adrian Teo*, *Ercument Dirice*, and *Rohit Kulkarni**

Harvard University

2:35-2:55

The formation of 3-D cultures induces integrin glycosylation in beta cells

*Eitan M. Akirav**, Michael Spelios, Lauren Kenna, and John Olsen

Winthrop University Hospital

2:55-3:15

Endogenous protein CCN5/WISP2 promotes cell proliferation and survival in pancreatic islets

*Jun-Li Liu**

McGill University

3:15-3:30 Coffee Break

IV. Metabolism and Integrated Physiology

3:30-3:50

β -cell specific ATGL deficient mice are protected from diet-induced obesity, hyperinsulinemia and hyperglycemia

*Camille Attané, Peyot ML, Wang S, Mitchell G.A, Lussier R, Zhao S, Pineda M, Madiraju S.R. M, Joly E et Marc Prentki**

Université de Montréal

3:50-4:10

CHOP null or heterozygote mice are not protected against high fat diet induced metabolic stress

*Dhananjay Gupta, Basanthi Satish, Tom Jetton, and Jack Leahy**

University of Vermont

4:10-4:30

Metabolic reprogramming in male offspring in a non-dietary model of liver insulin resistance

*Dario F De Jesus, Ercument Dirice, Abdelfattah El Ouaamar, and Rohit Kulkarni**

Harvard University

4:30-4:50

Role for an adipose-immune pathway that may guard against beta cell failure

*James Lo, Molly Kelly, Bruce Spiegelman**

Harvard University

4:50-5:20

Open Discussion: "Which Cre-deleter strain is suitable for beta-cell specific gene deletion?"

Jennifer L. Estall, Discussion Leader

5:20 - Business meeting

6:00 - Reception and Dinner, *The Ice House Restaurant*, Burlington Waterfront